

DPSCS REORGANIZATION

REGIONAL INTEGRATION, FINDING EFFICIENCIES, IMPROVING RE-ENTRY



Maryland Department of Public Safety &
Correctional Services

Why Reorganize

2

DPSCS reorganization focuses on successful offender reentry and lower recidivism. Seamless integration of DPSCS divisions breaks down vertically siloed custody and supervision operations. Operational and communications efficiencies result.

- **Regional Integration**

- A regionally-based DPSCS across three areas of the state – North, Central and South

- **Finding Efficiencies**

- Better-served offenders flow through DPSCS system efficiently, utilizing fewer resources

- **Improving Reentry**

- Leveraging a new Offender Case Management System, DPSCS operational shift improves offender rehabilitation process

Current DPSCS Challenges

3

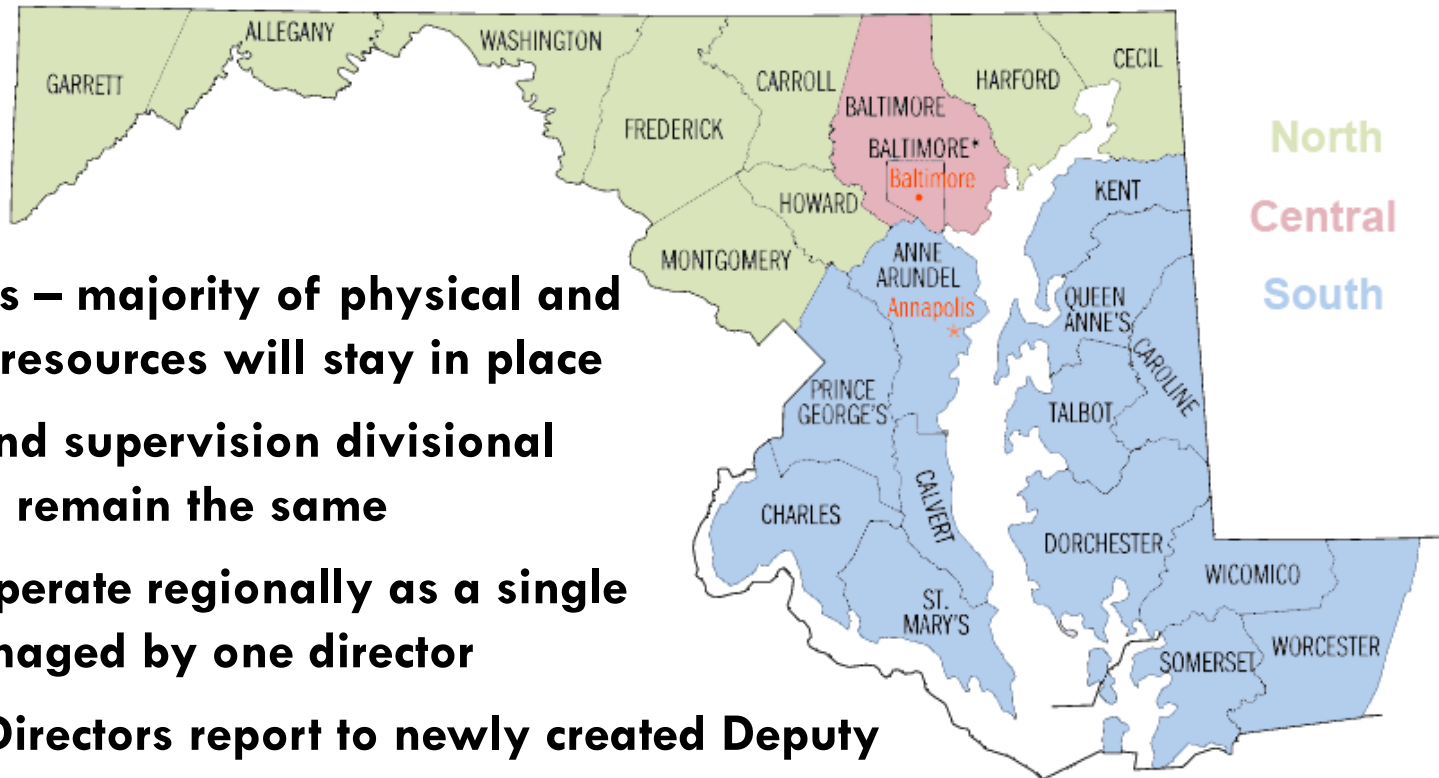
DPSCS custody and supervision operational structure make fluid movement of offenders from sentencing to rehabilitation difficult.

- **Siloed divisions, redundant efforts**
 - Divisions can be rigid/inflexible/narrowly focused inward
 - Barriers to communication – historically overly complex, not timely
 - Duplication in divisional programming efforts
- **Non-integrated offender services**
 - Inefficient inter-division case planning/mental-health services/program coordination
 - Difficult offender transition between divisions
 - Ultimately affects successful offender reentry
- **Under-developed local relationships/focus on locally available services**
 - Not maximizing community resources - family, housing, treatment, employment services
 - Inmates spread across system, inefficient family/legal counsel linkage prior to release

Regional Integration

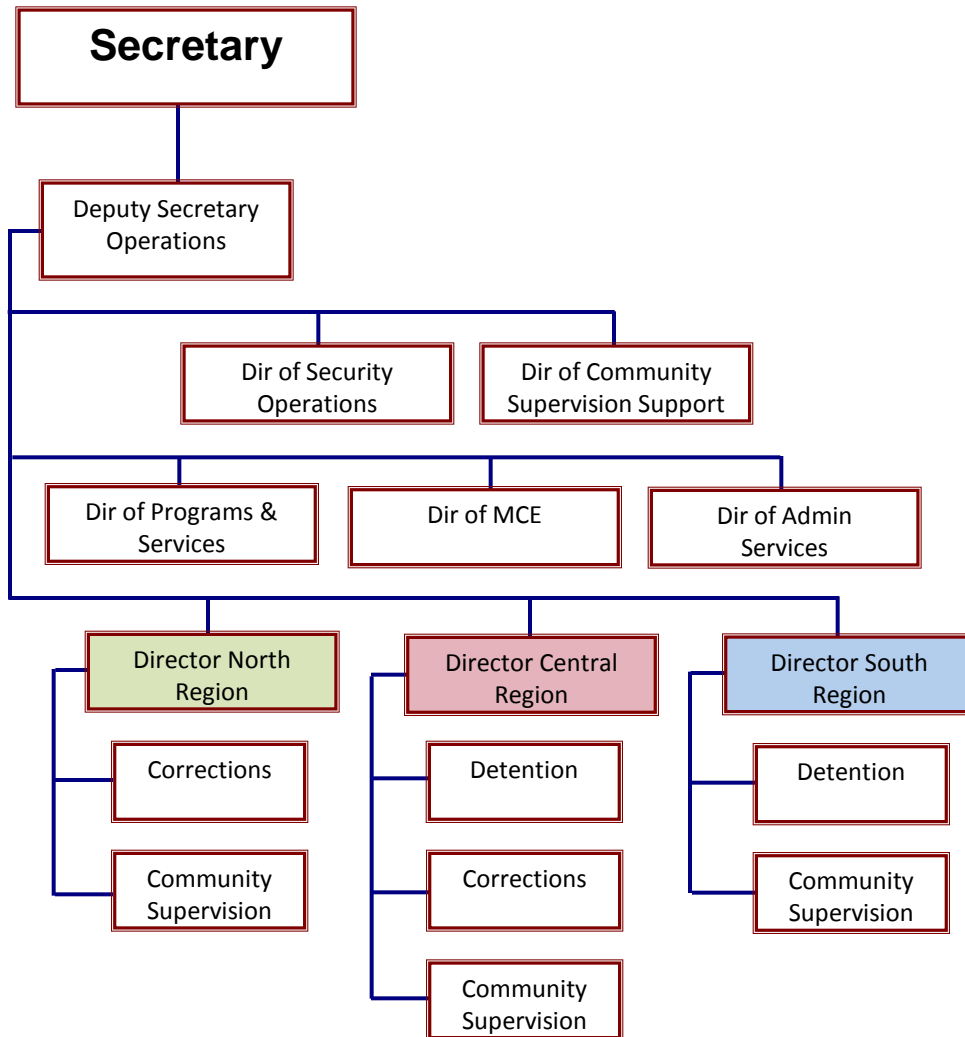
4

Reorganized DPSCS is regionally-based across three areas of the state – North, Central and South.



- ❑ **No job loss – majority of physical and employee resources will stay in place**
- ❑ **Custody and supervision divisional disciplines remain the same**
- ❑ **Services operate regionally as a single entity, managed by one director**
- ❑ **Regional Directors report to newly created Deputy Secretary of Operations position**

New DPSCS



South Region

Deputy Secretary for Operations
J. Michael Stouffer

Regional Executive Director
Patricia A. Vale

Community Supervision Director
David Dawkins

Assistant Director
Robert Hanson

Community Supervision Director
Yolanda Bethea

Assistant Director
Samantha Barrett

Director of Corrections
William O. Filbert, Jr.

Improving Reentry

6

Shift in DPSCS operations improves offender rehabilitation process, leveraging three-year, \$15 million investment into a new Offender Case Management System.

- OCMS integrates data flow, reorganization integrates operations**
- Creates more dynamic sequential offender case-planning between divisions**
- Incorporation of local intake and release**
- Specific offender rehabilitation needs better matched to regionally available programming and services**
- Better case-planning creates more effective and faster parole process**

Partnerships Increasing Reentry

7

Working in Southern MD, Public Safety Works partnerships are giving offenders the opportunity to give back to the community, while also providing employment before release:

- ❑ **Farm Field Gleaning**
 - ❑ 200,000+ lbs of eastern shore crops harvested for MD Food Bank
- ❑ **Cambridge Handicap Curbs**
- ❑ **Chesapeake Bay**
 - ❑ Bay Grasses – 80,000 shore grasses to prevent erosion
 - ❑ Oysters – 50 million spat & 9,000 cages for Marylanders Grow Oysters
- ❑ **Salisbury Safe Streets**
- ❑ **Habitat for Humanity**
 - ❑ 8 houses built by inmates in Federalsburg

